



WITCHERY OVERLAY  
MAXI DRESS IN COOL  
GREY \ \$179.95



TARGET CRÊPE  
SHIFT DRESS IN  
ORANGE \ \$30



SPORTSCRAFT  
SIGNATURE SILK  
PLACKET PRINT  
DRESS \ \$269.95



WITCHERY  
T-BACK  
SUNDRESS IN  
ZESTY YELLOW  
\ \$99.95



TARGET LINEN SPLICE  
SHIFT DRESS IN  
SPECTRA GREEN \ \$35



WITCHERY LINDSAY SLIDE IN  
BLACK & WHITE \ \$129.95



SPORTSCRAFT  
IBIZA WEDGE  
SANDAL IN BLACK  
\ \$119.95

COLLETTE  
BY COLLETTE  
DINNIGAN  
GOA PALM PRINT  
PLACKET SHIRT  
DRESS \ \$289



## FASHION

\ CELEBRATE IN STYLE, WRITES ANNA KOSMANOVSKI

From Christmas day to New Year's Eve – and let's not forget all those end-of-year festivities and events in between – there's a lot of rummaging around the wardrobe asking the perpetual question: "What do I wear?"

The good news? If there's ever a time that warrants shopping for a new dress or accessories, it's now.

Nothing beats that great feeling of wearing a new and carefully planned outfit to your Christmas day lunch. And such a memorable occasion deserves a memorable outfit.

At the moment, there are plenty of vibrant trends.

Fittingly, for summer, the tropics trend is a favourite right now with fresh takes on jungle-inspired prints and colour palettes.

Then there's our current penchant for pastels, which makes a case for floaty, feminine choices in colours such as mint, pale pink and chambray blue.

True colour lovers are catered for with hues such as vermillion, watermelon, brilliant yellow, lime and phosphorescent green making it a brighter festive season. Blue, a year-round favourite, is still well placed for summer and can be paired with white for a fresh

yet glamorous look, reminiscent of the Greek islands.

Remember too, that fabrics such as silk and linen always feel a treat to wear, especially in summer, and these are great for events that fall on a warm day.

With new season looks celebrating lace in all its forms, it's hard to go past a white dress featuring broderie anglaise detailing. Such looks need hardly any accessorising; simpler white offerings can be teamed with metallic sandals or a bright necklace to make it a more memorable look.

The more fashion-adventurous might like to experiment with other summer trends, such as tie-dye and short playsuits in cute prints.

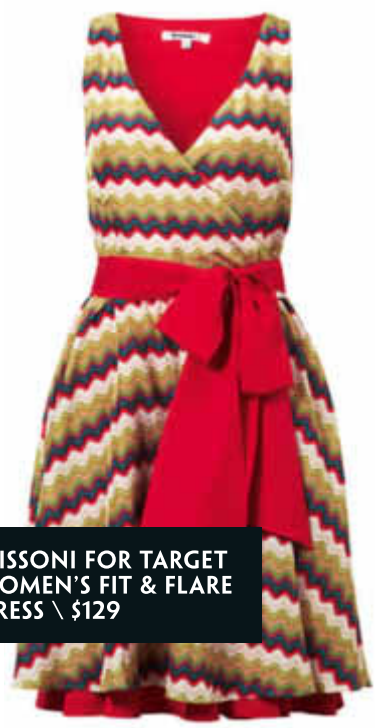
So whether you're on the lookout for a new year's eve dress or a fresh new look for Christmas day, we've compiled a selection of the latest summer looks that will carry you through this festive season in style. \

akosmanovski@theweeklyreview.com.au





WITCHERY  
MULTI-CORD  
NECKLACE IN ROSE  
GOLD \ \$49.95



MISSONI FOR TARGET  
WOMEN'S FIT & FLARE  
DRESS \ \$129

SILK & LINEN  
ARE A TREAT  
TO WEAR



SPORTSCRAFT BRAVA METALLIC  
SANDAL IN GOLD \ \$99.95



COTTON ON  
CO PALM SPRINGS  
PLAYSUIT IN BLACK  
\ \$49.95



MY  
BOUTIQUE  
LUCY DRESS  
WHITE \  
\$39.95

STOCKISTS »  
Collette by Collette Dinnigan \  
shop.collettedinnigan.com.au  
Cotton On Marketsquare \ 5229 2829  
My Boutique \ www.my-boutique.com.au  
Sportscraft \ www.sportscraft.com.au  
Target Geelong \ 5273 0300  
Witchery Geelong Malop Street \ 5222 2016



Chantelle  
PARIS

All I want  
for Christmas  
is you

MILANA'S

LINGERIE & SWIMWEAR BOUTIQUE

125A Pakington Street,  
Geelong West.  
Ph 5229 1228

(THE PHOTO DINER \ SUPPLIED)